

Spotfire® Industry Pro

Empowering advanced analytics for smarter decisions

Spotfire® Industry Pro equips domain experts and data scientists with the tools to transform complex data into actionable insights. Combining **advanced analytics, machine learning, and industry-specific capabilities**, Spotfire Industry Pro enables informed decision-making within an intuitive and interactive visual interface. Whether you are optimizing production, forecasting trends, or improving processes, Spotfire Industry Pro capabilities empower you to solve complex mission-critical business challenges across industries.

Key features and capabilities

Data understanding and preparation

Streamline data exploration and preparation with powerful tools:

- Detect patterns and outliers, manage missing values, and profile data quality
- Perform time series preprocessing for trend analysis and forecasting

- Enable efficient correlation analysis, sampling, and distribution comparison

Modeling and prediction

Leverage advanced analytics to anticipate outcomes and uncover actionable insights:

- Build predictive models using machine learning and statistical techniques
- Improve model accuracy with dimension reduction and explainability tools
- Forecast future scenarios with robust time series analysis



Spotfire® Industry Pro analysis

Process improvement

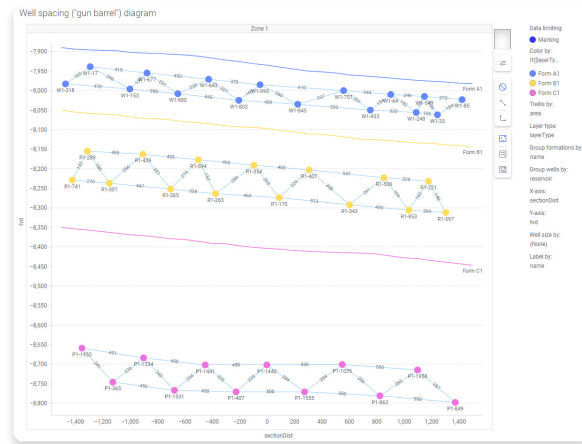
Enhance operational efficiency with data-driven process optimization:

- Conduct statistical process control and reliability analysis for better outcomes
- Optimize product designs and workflows with advanced experimentation tools

Industry-specific analytics

Spotfire Industry Pro offers tailored tools and data formats for specialized industries:

- Connect to data sources commonly used in energy, manufacturing, transportation, finance, and more
- Address industry-specific needs with tailored visualization and analytics



Spotfire® Well Spacing Diagram Mod

Business value across industries

No matter the industry, with Spotfire Industry Pro, you can transform operations, improve outcomes, and uncover insights that might otherwise go unnoticed. Its intuitive interface, predictive capabilities, and industry-tailored solutions make it easier than

ever to unlock the value hidden in your data. Here are some common use cases:

- **Energy:** Predict equipment failures, optimize drilling operations, and improve energy production reliability through advanced statistical modeling and process optimization.
- **High-tech manufacturing:** Enhance product quality and optimize yield by detecting defects, forecasting production issues, and optimizing resource allocation to improve efficiency.
- **Transportation and logistics:** Improve fleet reliability by predicting maintenance needs, optimizing delivery routes, and managing inventory more effectively with real-time and predictive insights.
- **Financial services:** Forecast market trends, monitor credit risks, and optimize portfolio management using predictive analytics and data-driven decision-making.

Unlock the potential of your data with Spotfire

Spotfire Industry Pro empowers businesses to unlock the full potential of their data with visual data science. By integrating **data preparation, interactive visualization, advanced analytics, and machine learning** into a single immersive experience, Spotfire Industry Pro enables you to move from reactive decision-making to proactive strategies. Whether you're predicting equipment failures, optimizing inventory, or uncovering trends in financial markets, Spotfire Industry Pro delivers actionable insights to drive smarter, faster decisions.

With its **streamlined workflows**, Spotfire Industry Pro simplifies even the most complex analytics tasks. You can prepare data, build predictive models, and conduct advanced analyses all within a unified platform. Its **versatility across industries** makes it an ideal solution for energy, high-tech manufacturing,

logistics, finance, and more—providing industry-specific analytics and tools to tackle your biggest mission-critical challenges. From improving product quality in manufacturing to managing fleet reliability in logistics, Spotfire ensures your data works harder for your business.

Unlock the future of data-driven innovation with Spotfire Industry Pro, and experience brilliance in action. Take the first step today!

Ready to get smarter with Spotfire? Talk to an expert today at www.spotfire.com/contact-us