

# TIBCO Spotfire and KNIME

## WHY SPOTFIRE?

TIBCO Spotfire is an analytics software platform for data exploration and collaboration. It has been ranked highest “Current Offering” in the Forrester Wave for Agile BI 2014. Spotfire lets you discover and share critical insights that drive real business value.

When you need to quickly and easily manipulate, analyze, and distill statistics from data, the combination of TIBCO Spotfire® and KNIME (pronounced nime to rhyme with lime) delivers unrivalled flexibility, power, and the ability to rapidly innovate. Using Spotfire and KNIME gives you the ability to rapidly iterate and visualize your analyses in a code-free environment for improved speed to insight.

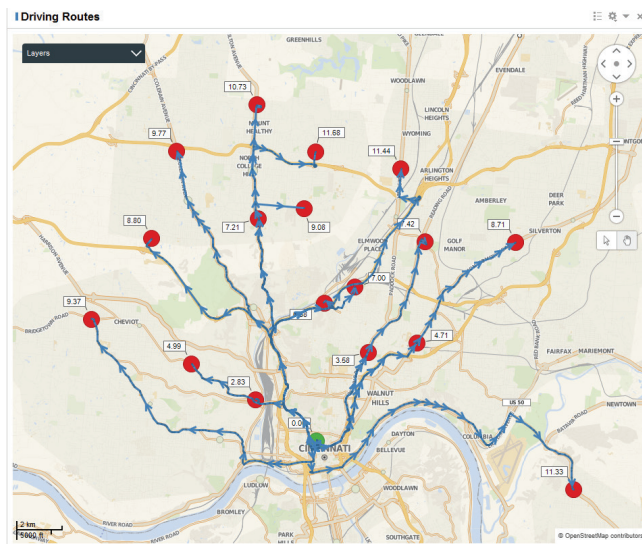
KNIME is a modern data analytics platform that allows you to perform sophisticated statistical analysis and data mining to analyze trends and predict results. Its visual workbench combines data access, data transformation, initial investigation, and powerful predictive analytics.

## WHY TERR?

TIBCO® Enterprise Runtime for R (TERR) is TIBCO’s advanced analytic engine for the R language, designed from the ground up for enterprise scalability and embedded analytics. TERR provides a commercially supported, robust, high-performance platform for R analytics without sacrificing flexibility and power.

## WHY KNIME?

KNIME is an open-source, enterprise-grade analytics platform for discovering the potential hidden in your data, mining for fresh insights, and predicting new futures.



The immensely powerful and extensible architecture enabled by Spotfire and KNIME enables the creation of data-driven applications and advanced analytical applications all from a combined and tightly integrated platform.

## COMBINED DATA PLATFORM

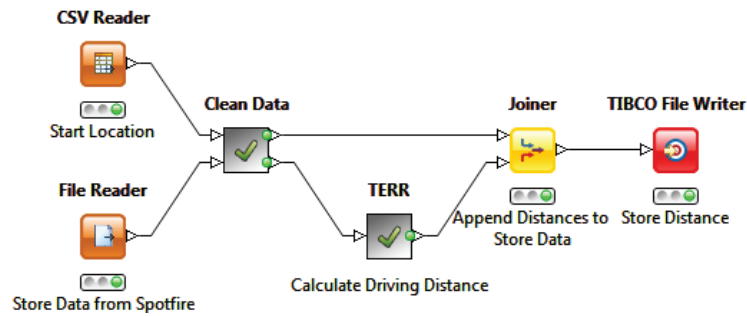
Use KNIME for:

- Data cleansing
- Extracting, transforming, and loading data
- Combining multiple, disparate sources of data
- Running advanced statistics in TIBCO® Enterprise Runtime for R (TERR)
- Performing geanalytics with TIBCO® GeoAnalytics Builder APIs
- Executing external APIs

## SHARE AND USE SPOTFIRE AND KNIME TOGETHER:

- Read and write Spotfire native data using 64-bit nodes
- Read and write Spotfire data from/to the Spotfire library

KNIME-processed data stored in the Spotfire library enables rapid evolution and easy sharing of data within your organization, without needing a warehouse for every data set. Sharing data in the Spotfire library sets you free from the constraints of database design, hosting, maintenance, and other support matters.



## TIGHT INTEGRATION

KNIME is tightly integrated with Spotfire:

- 1 Spotfire executes KNIME workflows asynchronously using the Infomatix KNIME connector (<http://infomatix.net/spotfire-extensions/ix-knime-spotfire-integration/>).
- 2 Spotfire passes user-selected parameters to a KNIME workflow to control its operation.
- 3 Spotfire sends data to KNIME so it may be used in a KNIME workflow.

Full list of KNIME/Spotfire nodes:

- 1 Spotfire File Writer – supports writing data to the Spotfire library and to the filing system. Binary and text format data.
- 2 Spotfire File Reader – supports reading data from the Spotfire library and from the filing system. Binary format data only (currently).
- 3 Spotfire Information Link Reader – reads data from Spotfire information links. Use it to take advantage of the information model you have already set up in Spotfire. Control access to the data; maintain your data connections in a single place.

## INSTALLATION INSTRUCTIONS

To install KNIME-Spotfire nodes, follow these steps:

- 1 From the Help menu, choose Install New Software.
- 2 Add a new repository by navigating to: <http://www.knime.org/update/partner/2.11> for KNIME version 2, and <http://update.knime.org/partner/3.1> for KNIME version 3.
- 3 Choose the Spotfire File Nodes extension.
- 4 Keep choosing Next, until you complete the wizard, accepting installation of unsigned software. Restart KNIME when the installation is complete.
- 5 After restart, you should see a separate TIBCO category in the node browser, from which you can pick Spotfire nodes.

## ROCK-SOLID, LIGHTNING-FAST TERR

In KNIME, TERR replaces open-source R for statistical programming, combining performance and scalability with supportability.

TERR provides the broadest, most stable, fastest access to analytics:

- Supports in-database (Teradata, Oracle) analytics.
- Supports in-Hadoop analytics (Apache, Horton, Cloudera, MapR).
- Supplies zero learning curve for R programmers; existing code can be reused.



**TIBCO Spotfire**  
 281 Summer Street,  
 3rd Floor  
 Boston, MA 02210  
 +1 866-240-0491 US  
 +44-800-520-0443 EUR  
[www.tibco.com](http://www.tibco.com)  
[spotfire.tibco.com](http://spotfire.tibco.com)

**TIBCO Software** empowers executives, developers, and business users with Fast Data solutions that make the right data available in real time for faster answers, better decisions, and smarter action. Over the past 15 years, thousands of businesses across the globe have relied on TIBCO technology to integrate their applications and ecosystems, analyze their data, and create real-time solutions. Learn how TIBCO turns data—big or small—into differentiation at [www.tibco.com](http://www.tibco.com).

©2014-2016, TIBCO Software Inc. All rights reserved. TIBCO, the TIBCO logo, TIBCO Software, and Spotfire are trademarks or registered trademarks of TIBCO Software Inc. or its subsidiaries in the United States and/or other countries. All other product and company names and marks in this document are the property of their respective owners and mentioned for identification purposes only.  
 02/19/16